

TECHNOLOGY

HOLYKELL®

HPT701

PRESSURE

• DATASHEET •

- 1. Pressure Measurement** 2. Level Measurement 3. Temperature Measurement
4. Flow Measurement 5. Display & Control Instruments
6. Wireless Monitoring System 7. Velocity Measurement

HPT 701

Standard Industrial Air Differential Pressure Transmitter

Applications

- HAVC Air differential pressure
- Wind pipe pressure measurement
- Wind machine
- Industrial dust removal equipment
- Purification plant
- Blow down expander
- Leak detection device

Features

- Pressure sensitive
- Digital temperature compensation
- Imported chip assembled
- Strong anti-humidity and water-resistance
- IP65 enclosure
- Advanced circuit linearity
- Compact and easy to install

Profiles

HPT701 differential pressure transmitter is designed for monitoring pressure or differential pressure in industrial and OEM applications.

This differential pressure transmitter adopts imported chip and is made by advanced technology and processes. The circuit linearity and temperature compensation technologies make it better performance. It is compact with stable structure and light weight. This product is suitable for the pressure or differential pressure measurement of various dry and non-corrosive gases with high measurement accuracy, widely used in many fields such as electrical power, environmental protection, dust removal, textile, leakage detection and etc.

Its installation is very simple. There are M4 screw mounting holes on both sides of the housing, and the air nozzle is also threaded. The user can choose to fix it with screws or M10×1.5 nuts.



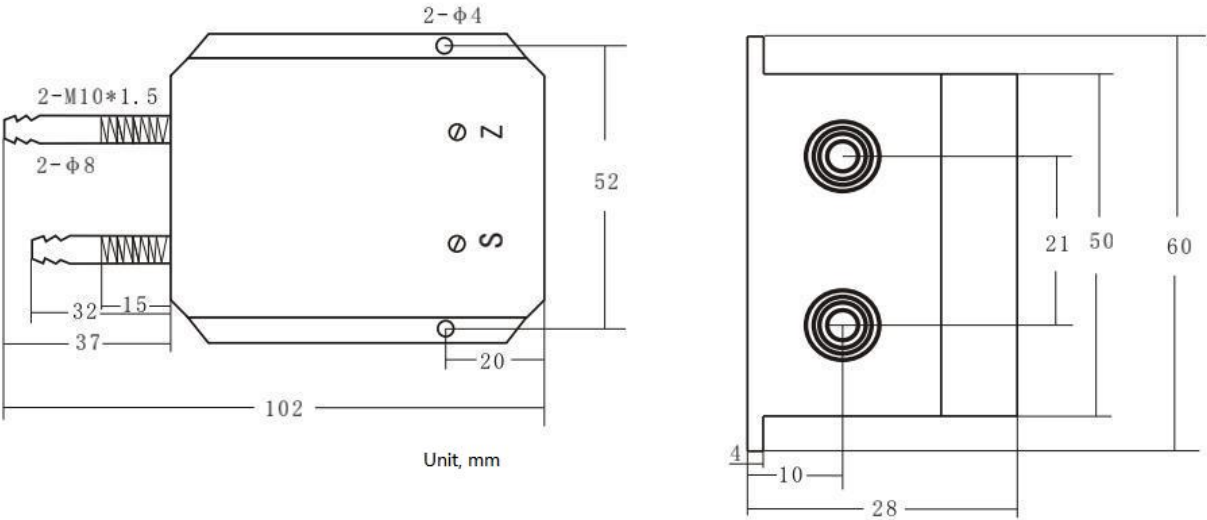
Measuring range	
bar	0-0.001bar...2bar max or \pm
	0.001bar...1bar
KPa	0-0.1KPa...200KPa max or \pm
	0.1KPa...100KPa
Pa	0-100Pa...200000pa max or \pm
	100Pa...100000pa

Specifications

Ambient Temperature: 25°C (unless specified)

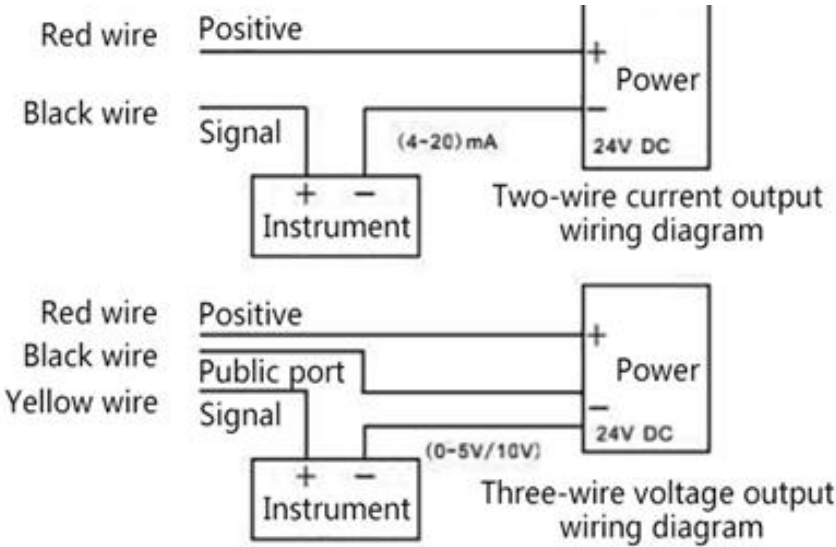
Parameter	HPT701				
Pressure Range	0-100Pa...200KPa max or ± 100Pa...200KPa				
Accuracy	0.5%F.S typical; 0.25%F.S(By customized) optional				
Working Temp.	-10℃~80℃ at 25℃				
Temp. compensation	-10℃~80℃				
Medium compatible	Dry and non-corrosive gases				
Electrical wire	2 Wires		3 Wires		4 Wires
Output	4-20mA	0-5V	0-10 V	0.5-4.5V	RS485 Modbus RTU
Power Supply	8-30V with potentiometer; 24-30V without potentiometer			5Vdc	8-30V with potentiometer; 24-30V without potentiometer
Electrical connection	Fixed cable outlet				
IP Rating	IP65				
Pressure connect port	Φ8 gas port, Φ6 gas port , quick connector optional				
Pressure Type	Differential pressure				
Housing materials	Aluminum				

■ Dimensions and Drawing

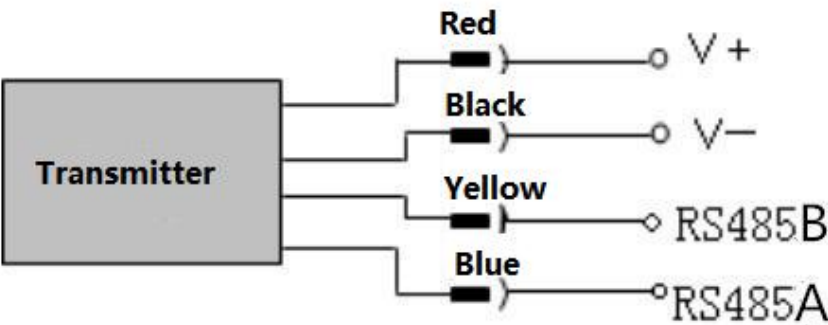


■ Electrical Connections

Wiring for current and voltage output



Wiring for RS485 output



How to Order

1. Pressure Range Selection Table:

01	±1	09	±200	17	25	25	50	33	500
02	±2	10	±250	18	30	26	100	34	600
03	±5	11	±300	19	25	27	150	35	700
04	±10	12	1	20	30	28	200	36	800
05	±20	13	2	21	25	29	250	X	By Customized
06	±50	14	5	22	30	30	300		
07	±100	15	10	23	25	31	350		
08	±150	16	20	24	30	32	400		





Kindly according to your application select suitable range code , Example: Code 16 =20 .
Unit of measure select on the Part Number Selection Table . Example: Code K=kPa , that's 20KPa.

2. Part Number Selection Table

701 Selection Type	18	K	E5	S12	40	P1	1	002
Pressure range	Range reference to pressure range selection table code							
Pressure unit	A=Pa K=kPa B=bar							
Signal output	E7=0-10V(3 wire) E5=4-20mA(2 wire) E6=0-5V(3 wire) E8=0.5-4.5V (3 wire) E11=RS485 Modbus RTU X= By customized							
Power supply	S12=8-30V dc S40=24-30Vdc S6=5Vdc X= By customized							
Pressure connection	39= Ø6 gas mouth 40= Ø8 gas mouth 41= Quick connector X= By customized							
Max static pressure	P1= Standard by DP Range							
Accuracy	1=0.5%F.S 2=0.25%(by customized)							
Cable length	000=Non-Cable 001= Cable 1M 002= Cable 2M X= By customized							

Accessories

(Notes: Please purchase separately. For the price of accessories, please contact our sales.)

	Description	Order number
	Liquid level display control device With all kinds of liquid level sensor, measurement according to liquid level, and according to the setting of the container structure and size and the density of liquid, calculation, display liquid volume or quality.	0008
	Adapter Converter It is able to convert RS-232 signal to RS-485 balanced differential signal and extend the communication distance to 1.2km. It uses a particular pump to gain power from RS-232 signal (RTS, DTR, TXD) without initializing the RS-232 series interface. This interface converter does this without requiring any AC or DC power.	0005
	Surge electrostatic protector Anti-surge $\pm 2000V/\pm 4000V$, anti-static 18KV, suitable for protecting 4-20mA and RS485 circuits.	0014
	Terminal box The terminal box, with IP67 and watertight ventilation element, provides a moisture-free electrical termination for the submersible pressure transmitter. It should be mounted in dry environment or directly in the switch cabinet.	0003

Order information

Model /Measuring range /Output Signal/Medium/Cable length/Case/Accessories